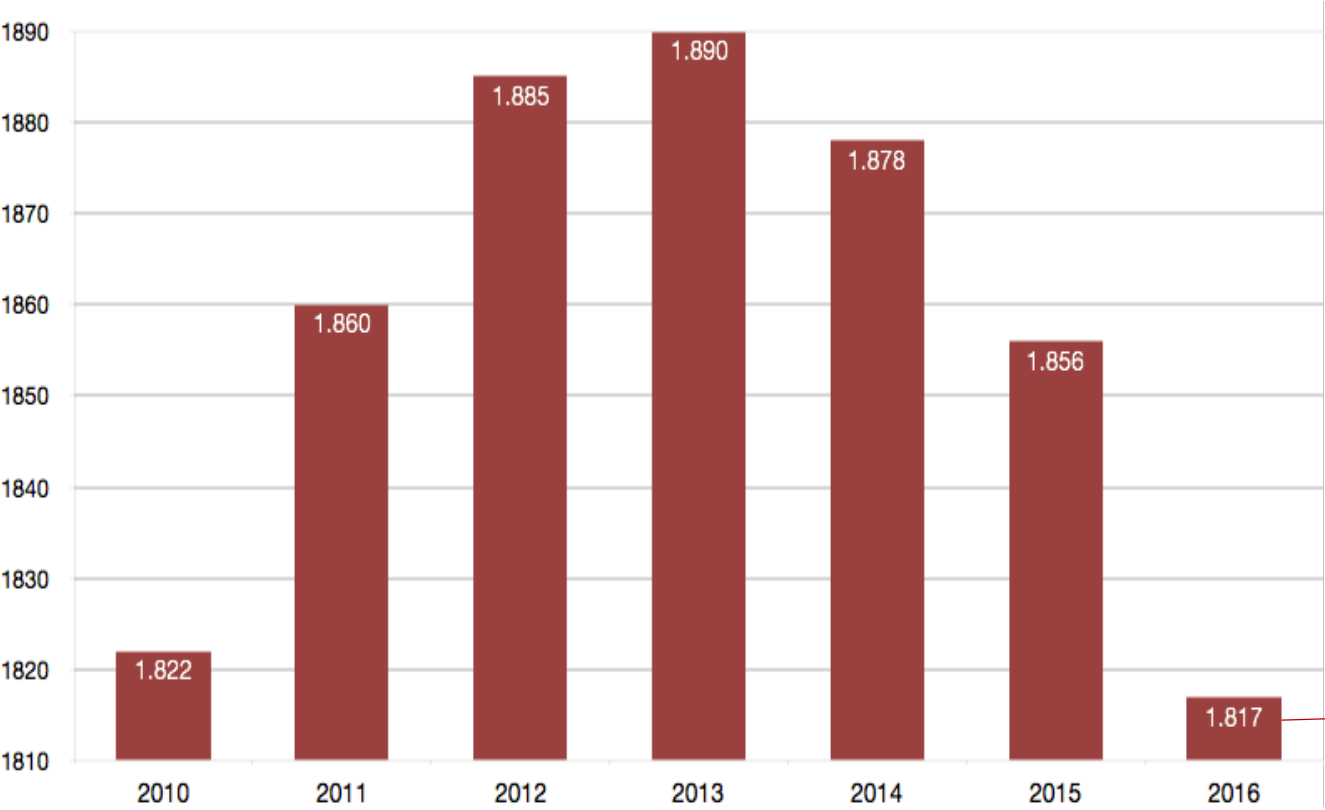


Edilportale tour Bologna
9 maggio 2019

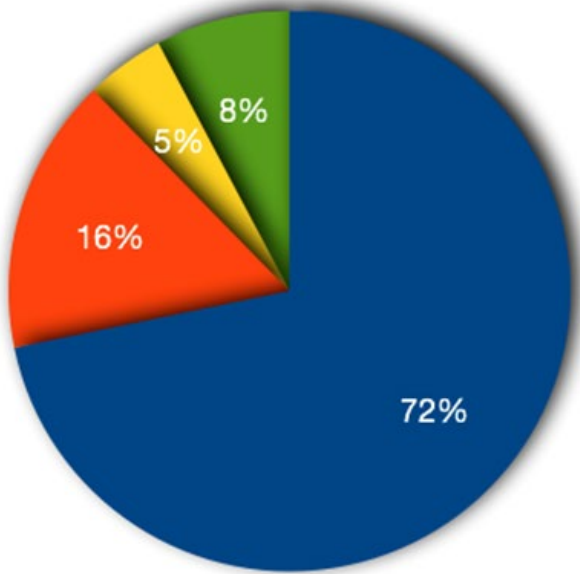
Ordine architetti, paesaggisti, pianificatori e conservatori di Bologna
Andamento numero iscritti negli ultimi anni - Dati Bilancio Sociale 2016



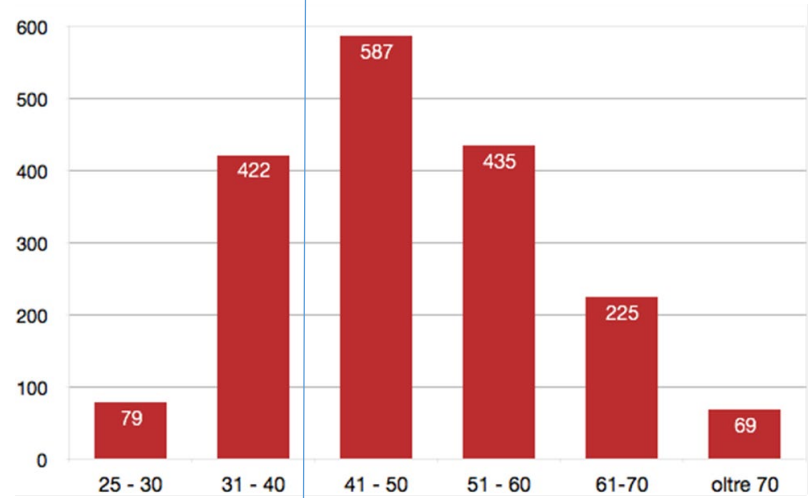
Di cui (Dpr 328-01)	
Architetti:	1.797
Pianificatori:	6
Paesaggisti:	4
Conservatori:	0
Architetti Junior:	10
Pianificatori Junior:	0

Ordine architetti, paesaggisti, pianificatori e conservatori di Bologna
 Divisione area geografica ed età degli iscritti - Dati Bilancio Sociale 2016

● Area 1 ● Area 2 ● Area 3 ● Area 4

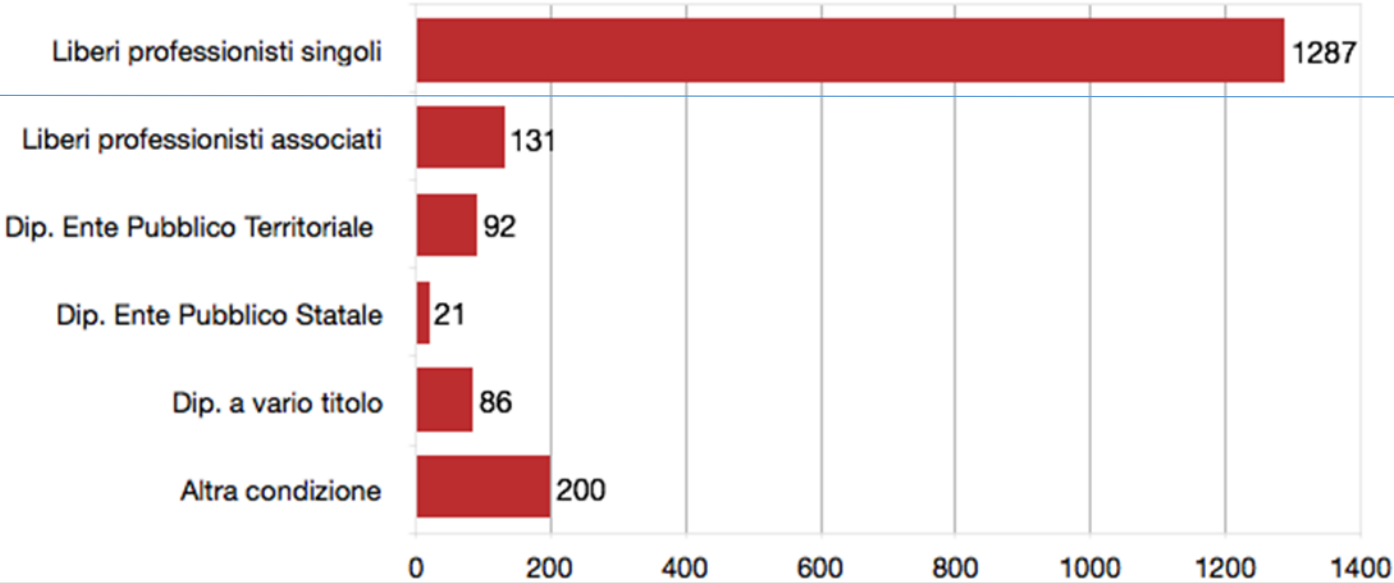
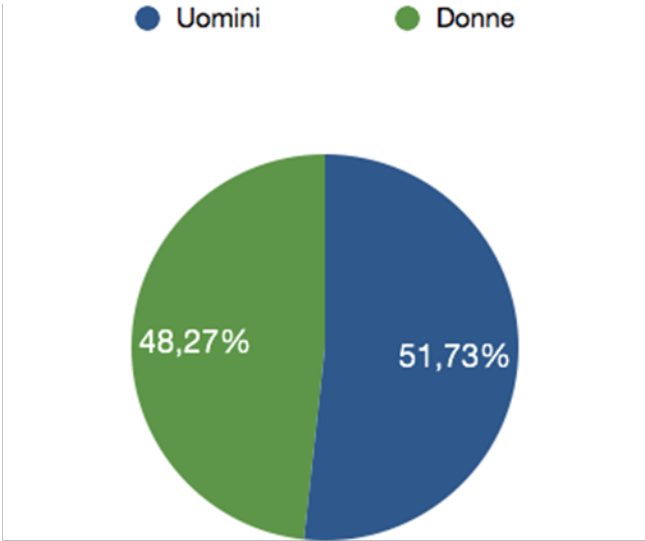


- 1 Bologna ed area Metropolitana (es. Casalecchio, San Lazzaro, ecc.)
- 2 Comuni seconda fascia (Es. Zola, Baricella, Budrio, Sasso Marconi, ecc.)
- 3 Comuni terza fascia (Porretta, Savigno, Molinella, Crevalcore, ecc.)
- 4 Circondario Imolese (Imola, Dozza, Fontanelice, ecc.)



501 under 40 = 27%
 1316 over 40 = 63%

Ordine architetti, paesaggisti, pianificatori e conservatori di Bologna
Divisione genere e per tipo di impiego- Dati Bilancio Sociale 2016



70,8 % del totale



TABLE 1-1
ESTIMATED NUMBER OF ARCHITECTS IN EACH COUNTRY AND NUMBER OF ARCHITECTS
PER 1000 POPULATION

	number of architects	population	architects per 1000 population
Austria	5 200	8 700 471	0.6
Belgium	15 100	11 289 853	1.3
Bulgaria	2 000	7 153 784	0.3
Croatia	2 200	4 190 669	0.5
Cyprus	950	848 319	1.1
Czech Republic	8 300	10 553 843	0.8
Denmark	10 000	5 707 251	1.8
Estonia	800	1 315 944	0.6
Finland	3 500	5 487 308	0.6
France	30 000	66 661 621	0.5
Germany	109 200	82 162 000	1.3
Greece	18 200	10 793 526	1.7
Hungary	4 200	9 830 485	0.4
Ireland	2 500	4 355 500	0.6
Italy	157 000	60 665 551	2.6
Latvia	800	2 335 307	0.3
Lithuania	1 350	2 888 558	0.5
Luxembourg	950	576 249	1.6
Malta	650	434 403	1.5
Netherlands	11 200	16 979 120	0.7
Norway	3 740	5 213 985	0.7
Poland	14 000	37 967 209	0.4
Portugal	22 200	10 341 330	2.1
Romania	7 600	19 759 968	0.4
Serbia	8 000	7 076 372	1.1
Slovakia	1 650	5 426 252	0.3
Slovenia	1 350	2 064 188	0.7
Spain	53 800	46 438 422	1.2
Sweden	6 550	9 851 017	0.7
Switzerland	7 300	8 325 194	0.9
Turkey	50 000	78 741 053	0.6
United Kingdom	36 700	65 341 183	0.6
EUROPE - 32 - 2016	597 100	609 412 615	1.0
EUROPE - 32 - 2014	578 800	565 981 316	1.0
EUROPE - 32 - 2012	550 530	601 451 878	0.9
EUROPE - 32 - 2010	525 700	595 082 893	0.9
EUROPE - 32 - 2008	485 480	586 877 058	0.8

CHART 3-2
AVERAGE SIZE OF ARCHITECTURAL PRACTICES



CHART 2-12
WORKLOAD PREDICTIONS FOR 2017

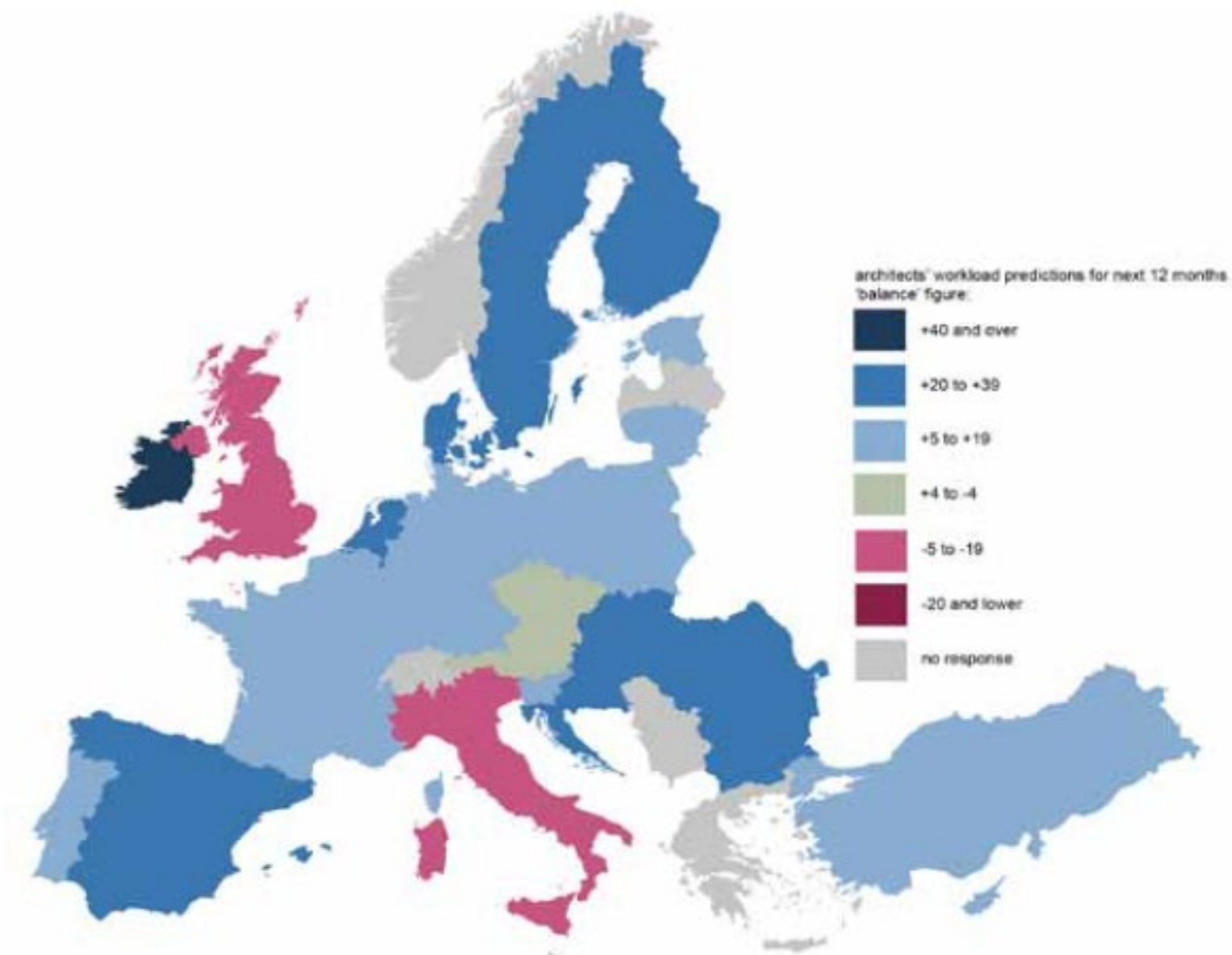




TABLE 4-14
HOW OFTEN ARCHITECTS ARE BEING ASKED TO BUILD TO NEARLY ZERO ENERGY STANDARDS,
ANALYSED BY COUNTRY

per cent respondents	less than 10% of the time	between 10% and 25% of the time	between 26% and 50% of the time	more than 50% of the time	always
Austria	32	15	17	29	8
Belgium	58	18	12	10	3
Bulgaria	62	19	13	5	1
Croatia	69	13	8	7	3
Cyprus *	43	16	10	16	16
Czech Republic *	76	15	2	2	5
Denmark	56	13	11	14	6
Estonia *	43	21	13	23	0
Finland	64	13	10	9	3
France	60	16	10	9	5
Germany **	n/a	n/a	n/a	n/a	n/a
Hungary *	n/a	n/a	n/a	n/a	n/a
Ireland	75	10	7	8	0
Italy	70	14	7	7	3
Lithuania	57	17	13	9	5
Luxembourg	32	22	19	13	14
Malta *	27	20	11	30	12
Netherlands	63	23	5	7	2
Poland	55	21	14	8	2
Portugal	84	13	2	0	1
Romania *	66	14	10	7	3
Slovakia	71	13	13	3	0
Slovenia	59	22	12	7	0
Spain	69	10	10	11	1
Sweden	75	7	4	7	6
Turkey	82	10	5	2	2
United Kingdom	72	10	7	5	5
2016 EUROPE-27	69	13	8	7	3
2014 EUROPE-26	59	15	12	10	4
2012 EUROPE-25	53	20	14	9	3
2010 EUROPE-23	58	15	15	8	4
2008 EUROPE-17	n/a	n/a	n/a	n/a	n/a

* caution - small sample ** no data because question was not asked 2008 - question was not asked in 2008

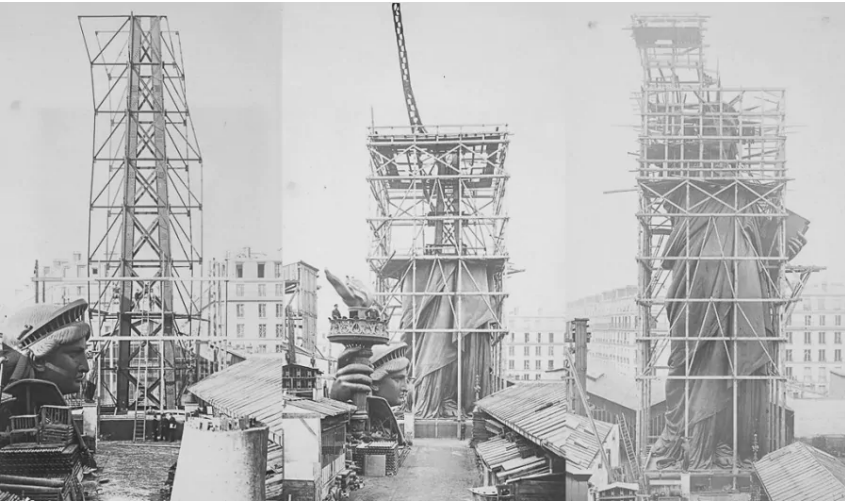
TABLE 4-15
HOW OFTEN ARCHITECTS ARE CURRENTLY BEING ASKED TO DESIGN ENERGY EFFICIENCY
AS A RETROFIT SERVICE BY THEIR CLIENTS, ANALYSED BY COUNTRY

per cent respondents	less than 10% of the time	between 10% and 25% of the time	between 26% and 50% of the time	between 51% and 99% of the time	always
Austria	34	27	22	14	3
Belgium	19	21	23	29	8
Bulgaria	35	27	14	13	11
Croatia	47	24	16	10	2
Cyprus *	48	14	20	12	6
Czech Republic *	68	19	12	2	0
Denmark	43	14	20	15	8
Estonia *	32	4	17	36	11
Finland	80	8	5	6	1
France	36	21	19	16	8
Germany **	n/a	n/a	n/a	n/a	n/a
Hungary	n/a	n/a	n/a	n/a	n/a
Ireland	19	23	29	22	6
Italy	37	19	17	19	8
Lithuania	60	18	12	7	3
Luxembourg	41	22	17	12	8
Malta *	31	27	17	21	4
Netherlands	63	23	5	7	2
Poland	n/a	n/a	n/a	n/a	n/a
Portugal	69	16	7	8	0
Romania *	57	19	14	7	3
Slovakia	63	16	11	5	5
Slovenia	39	24	25	9	3
Spain	37	18	16	23	7
Sweden	69	16	7	4	4
Turkey	73	14	8	4	2
United Kingdom	74	10	8	5	3
2016 EUROPE-27	48	18	14	14	6
2014 EUROPE-26	60	16	12	9	4
2012 EUROPE-25	n/a	n/a	n/a	n/a	n/a
2010 EUROPE-23	n/a	n/a	n/a	n/a	n/a
2008 EUROPE-17*	n/a	n/a	n/a	n/a	n/a

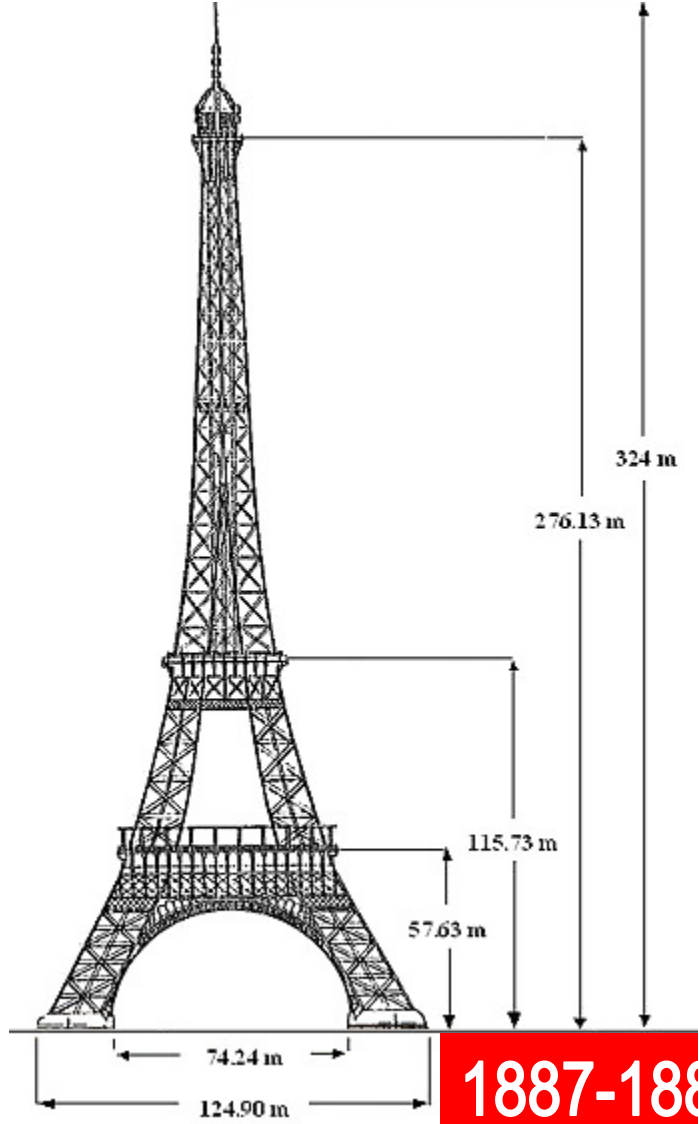
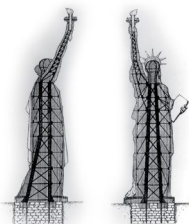
* caution small sample ** no data because question was not asked 2008/10/12 question was not asked in previous surveys

Classi di efficienza									
	A+	A	B	C	D	E	F	G	
Bologna	340	1712	4478	7179	10150	12177	12342	26100	74478
Forlì Cesena	52	405	1784	3223	3586	2855	2429	5639	19973
Ferrara	33	126	989	2295	3019	3115	3376	8444	21397
Modena	83	334	2331	4873	6590	6306	6705	15693	42915
Piacenza	15	276	938	1704	2580	2338	2176	4947	14974
Parma	149	482	1755	3068	3474	3645	3412	7869	23854
Ravenna	58	271	1293	3381	4590	4117	3571	8629	25910
Reggio Emilia	39	190	1080	3102	4613	4301	3765	8215	25305
Rimini	81	368	1743	3599	3418	2420	1899	4360	17888
	850	4164	16391	32424	42020	41274	39675	89896	266694
	0,32%	1,56%	6,15%	12,16%	15,76%	15,48%	14,88%	33,71%	100,00%

Fonte : Regione Emilia Romagna ottobre 2014



1875-1886



1887-1889

